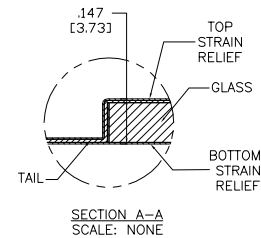
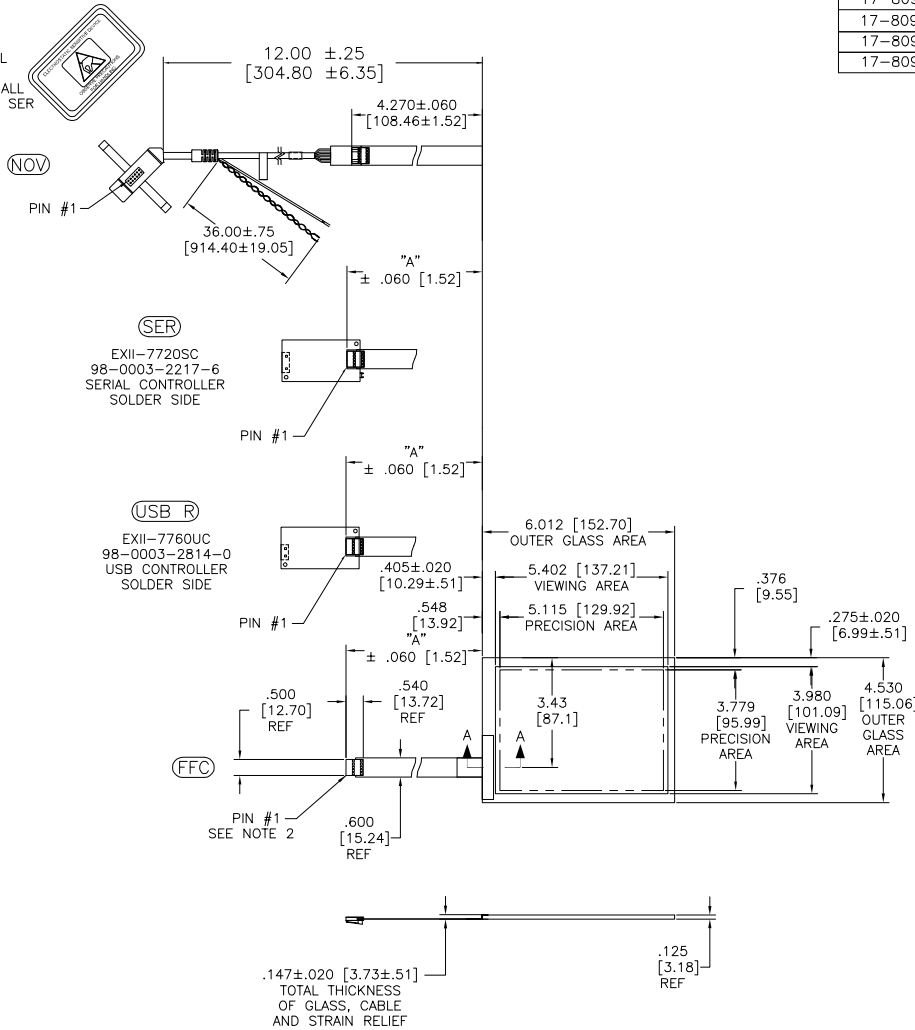


OGA DIAGONAL: 7.53 [191.20]
 VA DIAGONAL: 6.71 [170.43]
 PA DIAGONAL: 6.36 [161.53]

ESD CLAMSHELL CASE IS USED WITH ALL NOV, USB AND SER TERMINATIONS.



PINOUT	
1	LR
2	LL
3	SHIELD
4	UL
5	UR

NOTES:

- WEIGHT OF GLASS IN GRAMS: 134±10%
- NICOMATIC HOUSING P/N: 0L05
 NICOMATIC RECEPTACLES (PINS) MATTE TIN PLATED P/N: 14106-12
 HOUSING ORIENTED WITH LATCH DOWN

TOP LEVEL NUMBER	US NUMBER	TYPE	DIM "A" (TOTAL GLASS TO CONNECTOR)	A/G FINISH	PROD SPEC
17-8091-203	98-0003-2549-2	FFC	4.27" [108.46]	AG500	23655
17-8091-204	98-0003-2550-0	FFC	6.00" [152.40]	AG500	23655
17-8091-205	98-0003-2551-8	FFC	8.00" [203.20]	AG500	23655
17-8091-206	98-0003-2552-6	NOV	SEE DWG	AG500	23655
17-8091-221	98-0003-2555-9	SER	4.27" [108.46]	AG500	23655
17-8091-223	98-0003-2556-7	SER	6.00" [152.40]	AG500	23655
17-8091-227	98-0003-2558-3	SER	8.00" [203.20]	AG500	23655
17-8091-218	98-0003-2933-8	USB R	4.27" [108.46]	AG500	23655
17-8091-226	98-0003-2934-6	USB R	8.00" [203.20]	AG500	23655

H	REVISED PER CO 036256	4/13	SB
G	REVISED PER CO 033533	2/12	SB
F	REVISED PER CO 033535	9/11	SB
REV	CHANGE NOTICE	DATE	DRW

UNITS	INCHES [MM]
TOLERANCES UNLESS OTHERWISE SPECIFIED	
.X	± .03 [.76]
.XX	± .015 [.38]
.XXX	± .015 [.38]
ANGLES	±1°

3M 3M TOUCH SYSTEMS
 METHUEN, MA
 USA
 © COPYRIGHT 2005
 THIS DOCUMENT IS COPYRIGHTED PROPERTY OF THE 3M COMPANY AND MAY NOT BE REPRODUCED WITHOUT 3M WRITTEN PERMISSION OR USED OR DISCLOSED FOR OTHER THAN 3M AUTHORIZED PURPOSES.

TITLE			
MARKETING DRAWING SCT32NN 6.71"			
DRAWN	K. CROWLEY	9/05	CAD FORMAT AUTOCAD SHEET 1 OF 1
DO NOT SCALE DRAWING	SCALE 1 = 1	SIZE C	DOCUMENT NO. 28406-MKT REV H